

TEH STYLE AIR HEATER CLEANER DESCRIPTION

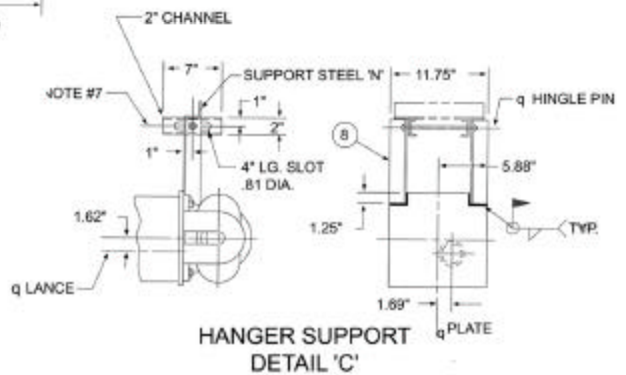
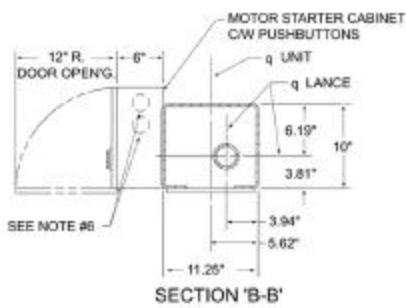
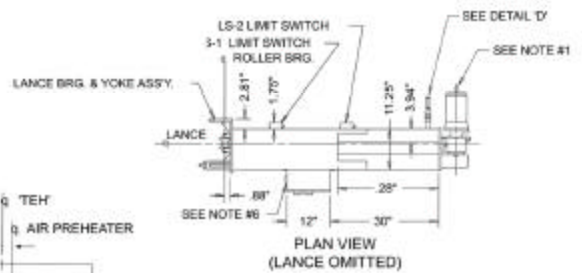
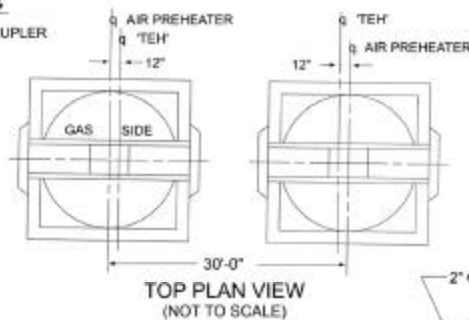
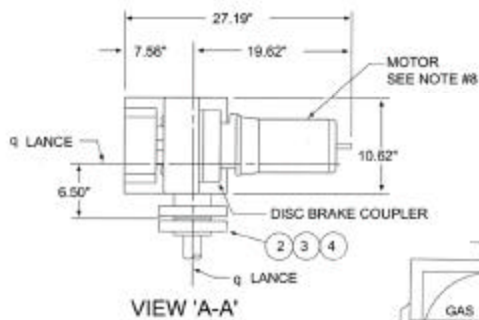
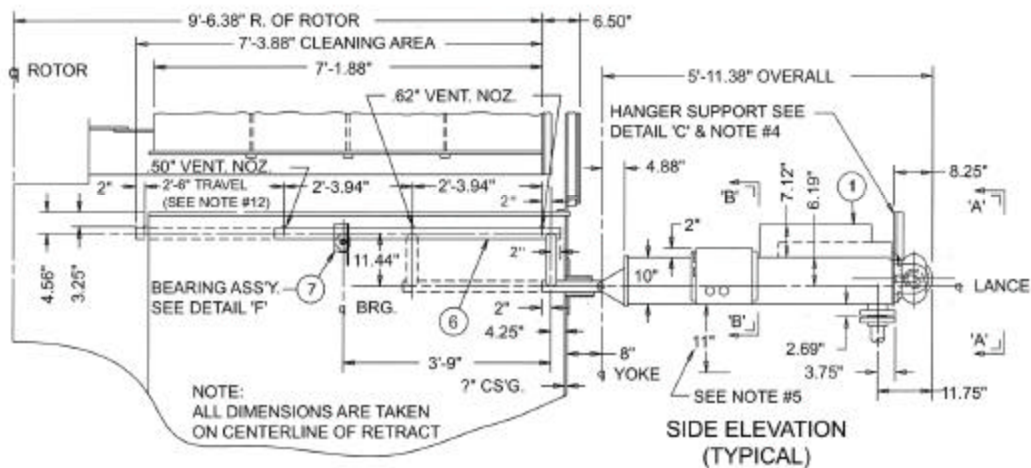
For regenerative Air Heaters with retractable type Air Heater Cleaner

The standard TEH-Regenerative Style Non-Rotating Air Heater Cleaner is similar to the T20E Retractable except the rotary gearing is eliminated from the travelling carriage and is replaced with a locking device to prevent lance rotation. The unit is comprised of a formed steel housing covering the top and sides, one (1) 0.6 HP TENV electric motor, a 2 3/8" O.D. alloy steel lance, a stainless steel feedtube, a special lance extension piece complete with specially sized blowing nozzles, limit switches, indexing timer and controls mounted in an integrally mounted NEMA 4 cabinet. Also included are a mounting adaptor, mounting yoke and either a mechanically operated head with external pressure adjustment or a Diaphragm-Air operated blowing medium control valve.

On the "Extend" cycle the unit is set to index the blowing nozzles every 4" with a pause timed to allow the air heater rotor to make one complete rotation. The total blowing time is based on the air heater size. The retract cycle is usually made without indexing. If the admission valve is used in place of the mechanical head, the blowing medium can be shut off during the retract cycle.

TEH STYLE AIR HEATER CLEANER DESCRIPTION

Housing	-	3/16" Cold Rolled Steel
Motor	-	0..6 H.P., (230/460V, 3 phase, 60 Hz, 865 RPM) TENV, Class 'F' Insulation for 55°C Rise 65°C Ambient.
Lance	-	2 3/8" O.D. A106 Gr. B Carbon Steel
Lance Extension	-	2 3/8" O.D. A106 Gr. B Carbon Steel, separately furnished To be attached in the field.
Feed Tube	-	Type 304 SST
Head	-	Carbon Steel, ASTM A-216 Grade WC-B - Optional Chrome-Moly ASTM A-217 Grade WC-6 'DVT' or Diaphragm Air Control Valve
Chain	-	RC-60 3/4" Pitch
Limit Switches	-	Heavy Duty, NEMA 4 Enclosures
Control Box	-	NEMA 4
Wiring – Box		
Conductor	-	16 AWG for Power - 16 or 18 AWG for Control
Insulation	-	(THHN) or (MTW) 90°C Rated
Sheath	-	Stranded Copper
Wiring – Cable		
Cable Sheath	-	Stranded Copper
Wiring	-	3 & 5 Conductor NEC type MC, 14 AWG Stranded (Class B) annealed copper, 90°C, 600V, Flame-Retardant.
Paint	-	Type: Enamel Color: Blue



**T20E-TEH STYLE
 AIR HEATER
 CLEANER**