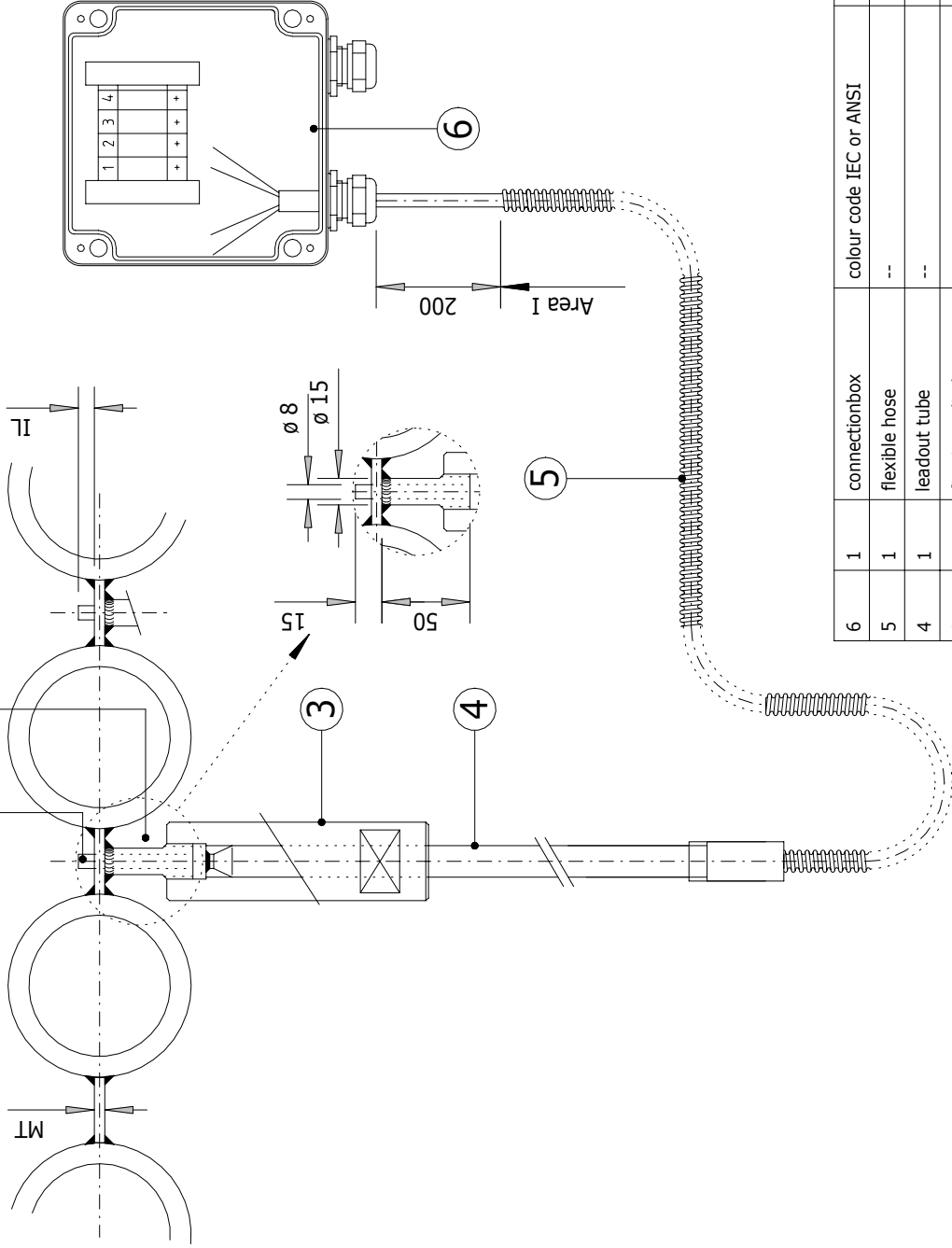


IL = Insertion Length	Standard Dim.
HL = Hose Length	7 - 10 mm
MT = Membrane Thickness	1000 mm
	varies



Fixation cylinder is machined by the user to fit the membrane and have: 7 mm < IL < 10 mm

See separate drawing on installation

6	connection box	colour code IEC or ANSI	--
5	flexible hose	Hose Length (HL) 1 meter	optional > 1 meter, Area I: Tmax 400 °C
4	leadout tube	--	--
3	fixation cylinder	--	--
2	mounting cylinder	St37.2 / 1.5122	--
1	sensor	--	--
	quantity	material	standard or dimension
	description		remarks



drawing name: **Membrane Sensor**

drawing no.: ms01-tech

version: 04

scale: 1:4

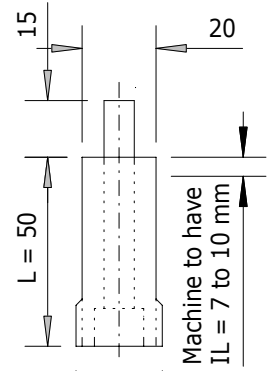
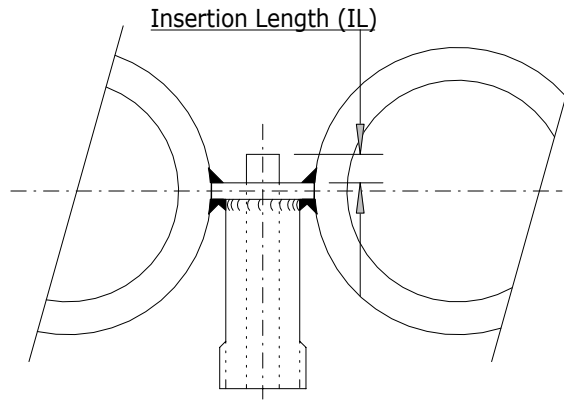
units: mm

engineer: Rogier Barents

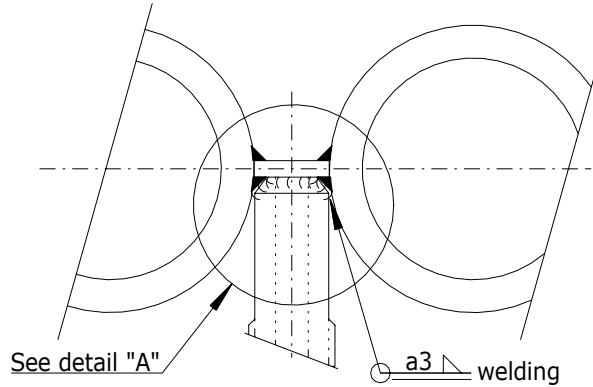
date: 20-09-2005

This drawing is property of Clyde Bergemann. Reproduction, utilisation or disclosure to third parties in any form whatsoever is not allowed without written permission.

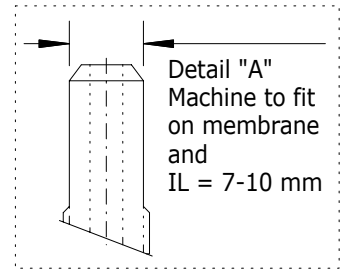
Step I:
Shorten fixation
cylinder to have
IL = 7-10 mm



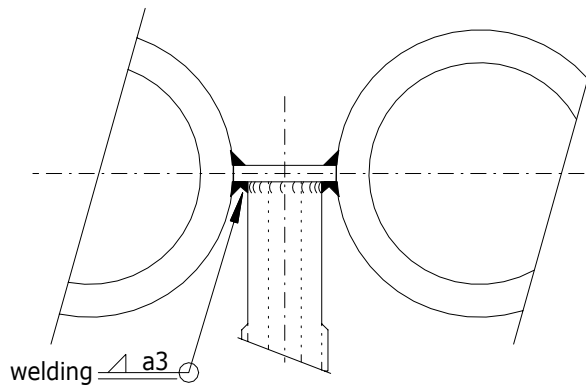
Step II:
Machine to fit
(optional) nar-
row membrane
(< 20 mm)



Fixation cylinder for
narrow membrane

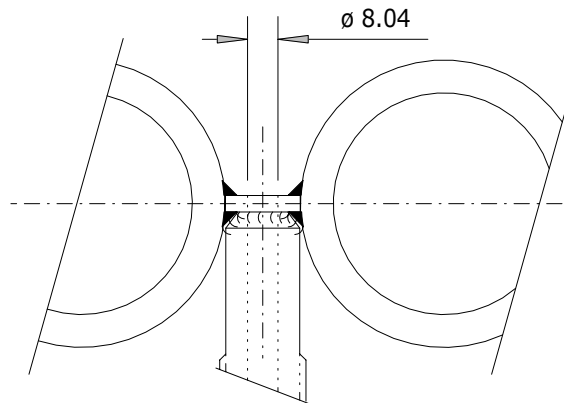



Step III:
Weld into position



Mounting cylinder for
wide membrane

Step IV:
Drill after welding
with 8 mm bore
through membrane



--	--	Mounting Cylinder	St37.2 / 1.5122	--	--
item	quantity	description	material	standard or dimension	remarks
			drawing name: Membrane Sensor Installation		scale: 1:2
			drawing no.: ms01-instal version: 02		units: mm
This drawing is property of Clyde Bergemann. Reproduction, utilisation or disclosure to third parties in any form whatsoever is not allowed without written permission.					engineer: Rogier Barents
					date: 02-08-2005