

D5E ELECTRIC OPERATED ROTARY SOOT BLOWERS

DESCRIPTION

The model D5E Rotary Soot Blower is designed to clean convection tube surfaces of package or field erected boilers, economizers and oil fired heaters where the flue gas temperature does not exceed 1900°F. For special applications, rotary soot blowers with special element materials may be used up to 2200°F flue gas temperature.

The D5E comes complete with a wall sleeve or adapter, a head of cast steel construction with an external pressure adjusting device, companion flange with gasket, studs and nuts, element support bearings and a multi-nozzle blowing element of appropriate material. The blowing element rotating speed is 1.5 R.P.M.

A standard D5E includes wiring from the motor and limit switch to a terminal block mounted in a NEMA 4 enclosure.

A forced pressure air check valve is used in the head to act as a vacuum breaker when the blower is at rest and the boiler flue gas pressure is balanced or negative draft.

Also available, is the addition of an integrally mounted NEMA 4 motor starter cabinet. With this arrangement, the motor starter, limit switch and motor are wired to a terminal block located in the starter cabinet.

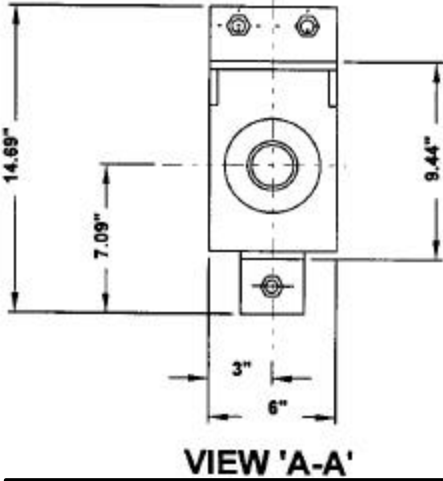
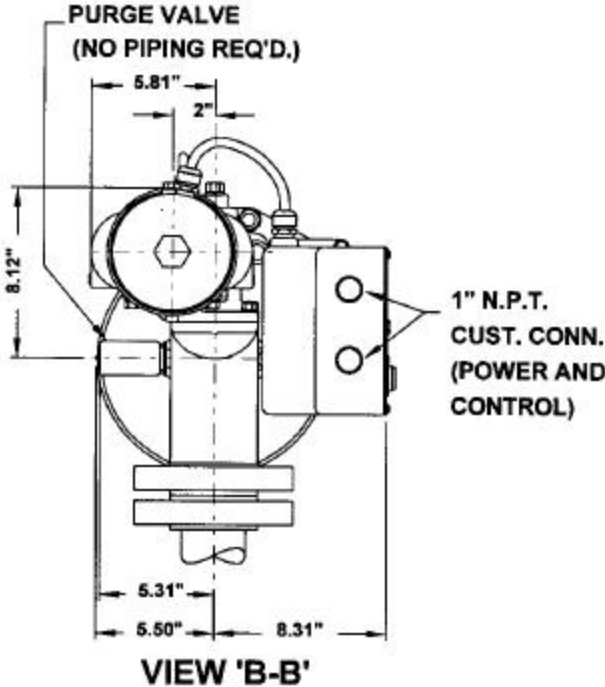
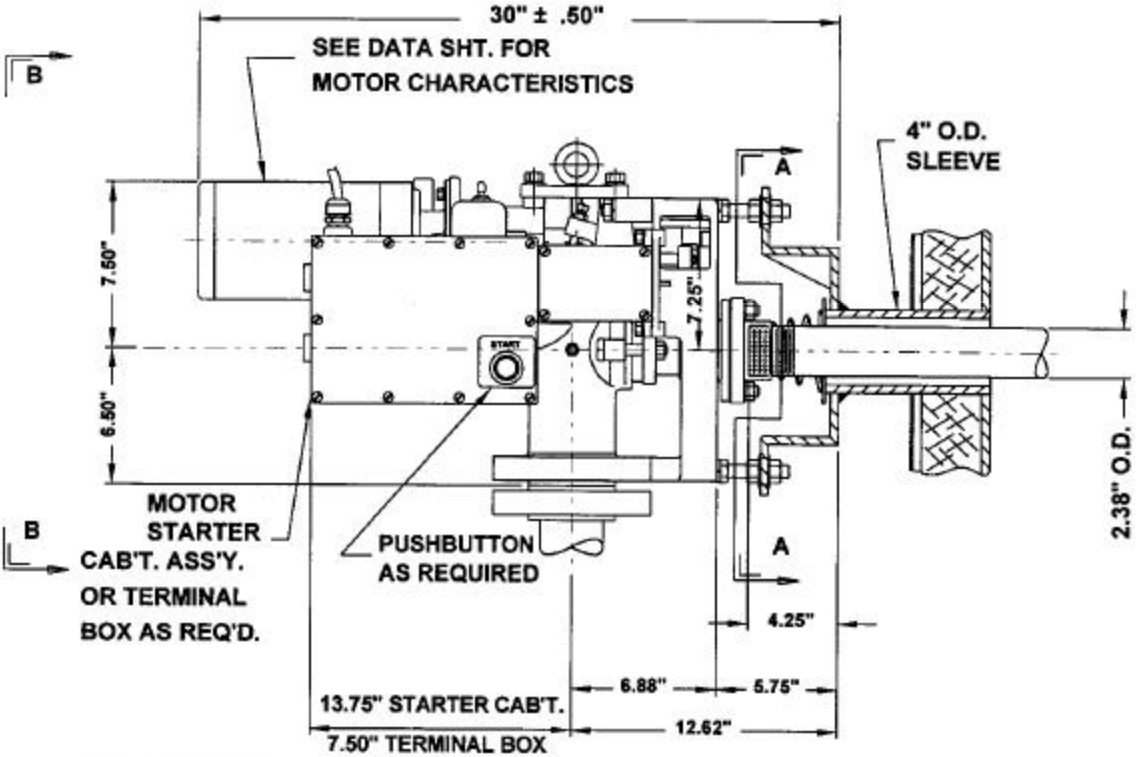
By adding a second limit switch, the D5E becomes a D5ES sequential blower; this then, enables it to automatically start the next blower in sequence. With this arrangement, the first blower is started manually or by a timer, with each blower then receiving its start impulse from the preceding blower, and with the last blower shutting the system “off” upon completion of blowing. This system is normally called a “cascade” sequence and is used with an ‘ECS’ (Electric Cascade Sequence) Panel .

For operation on a pressurized boiler, a stuffing box wall sleeve, seal assembly and a forced pressure air valve properly connected to a purge air source is required. Purge air at higher pressure than furnace pressure must be used to keep corrosive boiler flue gas from entering the rotary head through the nozzles located in the boiler.

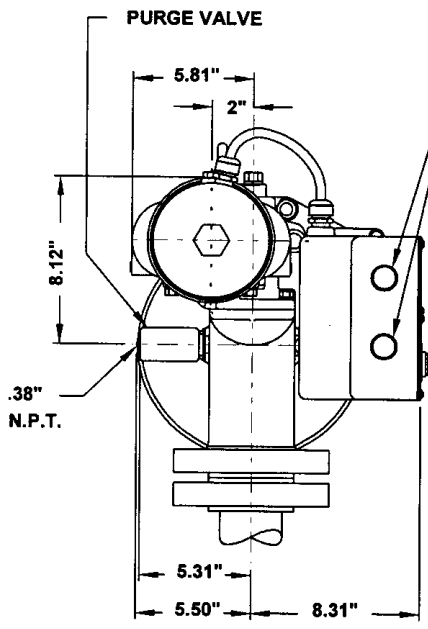
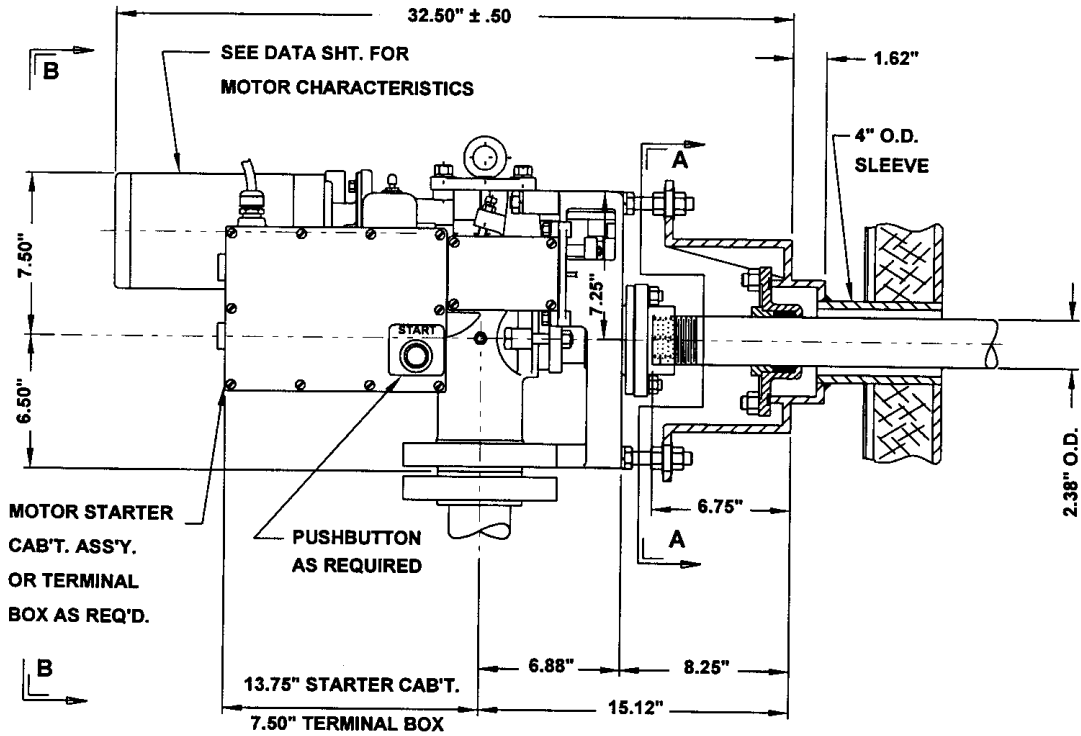
D5E Electric Operated Rotary Sootblower Specifications

Head	- Carbon Steel, ANSI Class 600, ASTM A216, Grade WCB Optional: Chrome-moly ANSI Class 600, ASTM A217 Grade WC6
Poppet Valve	- Type 410 Stainless Steel (prehardened)
Seat	- Solid Stellite Insert
Motor	- 1/8 H.P., 230/460 volt, 3 phase, 60 HZ, 1800 RPM, TENV (Other voltages available)
Limit Switches	- Heavy Duty
Push Button	- NEMA 4
Switch Box	- Cast Aluminum, NEMA 4
Bearings	
1500° to 1800°	Type 446 Stainless Steel (plate type)
900° to 1500°	Type 321 Stainless Steel (plate type) ASTM A297 GR HH (cast type)
Up To 900°	Carbon Steel ASTM A36 (plate type) ASTM A216 (cast type)
Elements	
1600° to 1900°	2" Seamless Schedule 80, Type 446 Stainless Steel Pipe, or equivalent
900° to 1600°	2" Seamless Schedule 80 Steel Pipe, Type 304 SS
Up To 900°	2" Seamless Schedule 80 Steel Pipe, ASTM A106 Grade B
Special Elements	- Corrosive Environment
HR-160	- 28CR, 37NI, 29CO, 2.75SI Solid Solution Strengthened Alloy by Haynes

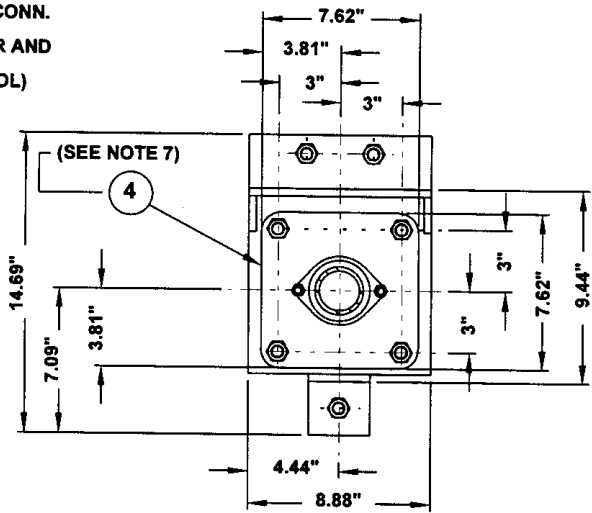
D5E Electric Operated Rotary Sootblower Specifications



**MODEL D5E
ROTARY
NON-PRESSURIZED**



1" N.P.T. CUST. CONN. (POWER AND CONTROL)



**MODEL D5E
ROTARY
PRESSURIZED**