

New !



SMART CONTROL™

The advanced and intelligent control system for the Water Cannon

General:

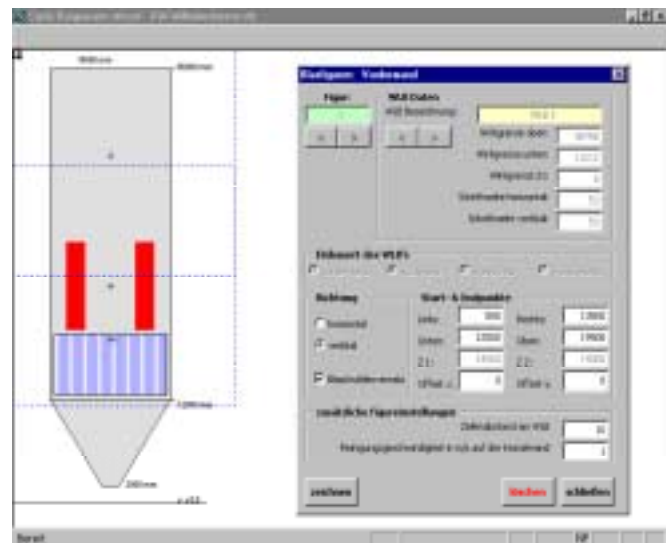
SMART CONTROL™ is an open PLC system with a PC-based operating and observation interface for the control of the new SMART CANNON™ and for retrofitting in existing WLB90 and/or WLB30 systems.

Decisive advantages are the graphic visualisation of all cleaning areas as well as cleaning and plant parameters in the boiler geometry.

The system provides the easy but comfortable configuration of all plant-specific data and is preset so that a Water Cannon system can be engineered and taken into service within a minimum of time.

Subsequent optimization of cleaning areas, which formerly required expensive and time consuming PLC program interventions, can be realized within minutes, at any time, thanks to graphic surfaces.

Authorized power plant personnel has also access to do changes or modification during operation. Besides easy handling SMART CONTROL™ furnishes a lot of additional information about the status of the cleaning system to the operating team.



At a glance they see which SMART CANNON™ is operating or which area is being cleaned. If water blowing is to be suspended for operational reasons, SMART CONTROL™ resumes water blowing, after its release, at that point at which it had been suspended.

Contact:

Head Office:

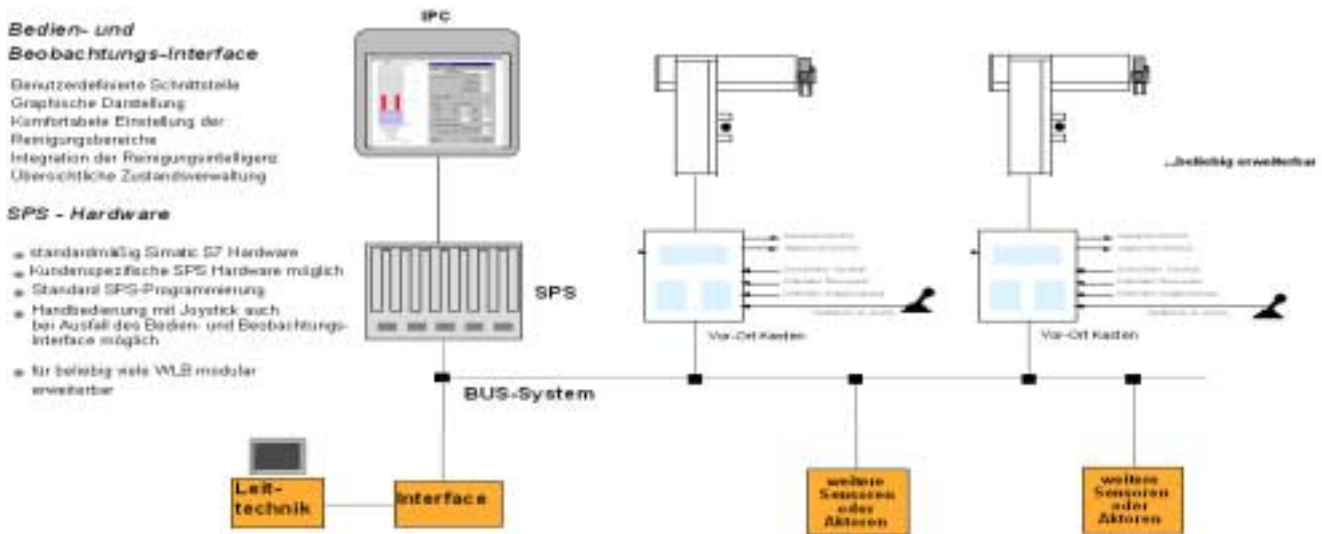
Contact Person:

Clyde Bergemann GmbH – Schillwiese 20 D-46485 Wesel

Phone: (+49)281/815-0 – Fax: (+49)281/53768 – <http://www.cbw.de>

Dipl.-Ing. Manfred Frach – Phone: (+49)281/815-410 – Fax: (+49)281/815-449 – eMail: mfrach@cbw.de

The Functioning Principle



System Description:

SMART CONTROL™ is an open modular-design system for the control of up to 30 water lance blowers.

Through the operating and observation interface the operators receive all information which is necessary for the control of the whole system. Electrical control of the water lance blowers takes place from the control cubicle which, in its standard version, is equipped with a S7-SPS.

Through specific customer interfaces the system can be easily linked, for example, with the general instrumentation and control system.

In this case the operating and observation interface is the engineering station.

Advantages:

Easy and comfortable programming or change of cleaning areas and WLB setting parameters

- Direct transcription of information from boiler drawing

- Automatic calculation of all relevant data

- Clear representation and documentation of

boiler geometry and the cleaning areas

- Automatic transmission of all relevant data to the control

Contact:

Head Office:

Clyde Bergemann GmbH – Schillwiese 20 – D-46485 Wesel
 Tel./Phone: (+49)281/815-0 – Telefax: (+49)281/53768 – <http://www.cbw.de>

Contact Person:

Dipl.-Ing. Manfred Frach – Tel./Phone: (+49)281/815-410 – Fax: (+49)281/815-449 – eMail: mfrach@cbw.de